

Hampshire Water Transfer and Water Recycling Project Environmental Statement - Figure 13.17 Local Landscape Character Areas

VOLUME NUMBER: 6

PLANNING INSPECTORATE SCHEME NUMBER: WA010002

APPLICATION DOCUMENT REFERENCE: 6.3

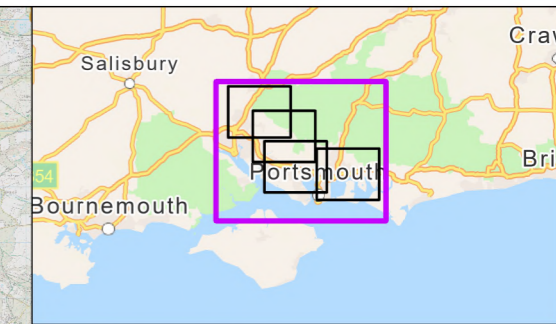
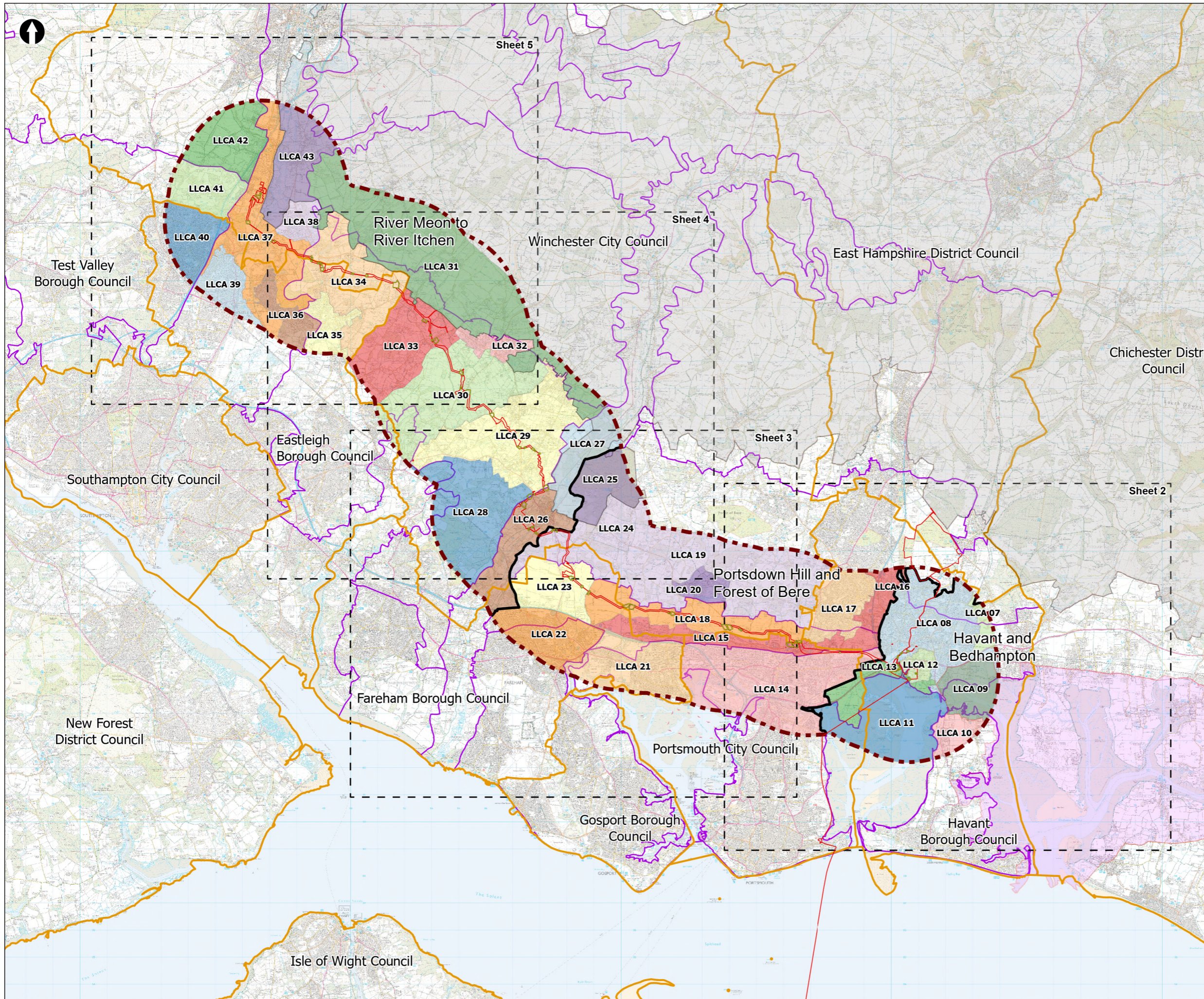
APFP REGULATION: 5(2)(a)

May 2026

Version 0



from
**Southern
Water** 



- Order Limits
- Landscape Study Area 3km
- Principal sections within the study area
- Sheet extent boxes 1:50k
- Local planning authorities
- South Downs National Park
- Chichester Harbour National Landscape
- Water Recycling Plant Site
- Construction compounds
- Hampshire Integrated Character Assessment

Local Landscape Character Areas
Refer to map

Note: LLCA 01 - LLCA 07 have been removed from this figure. The removal of the option comprising the proposed Underground Pipelines between the WRP site and Havant Thicket Reservoir means that these areas would no longer be affected by the Proposed Development. Consequently, LLCA 01 - LLCA 07 have been removed from the scope of the LVIA.

Coordinate system: British National Grid; Datum: OSGB 1936
Data sources: © Crown copyright and database rights 2026 Ordnance Survey 0100031673. Sources: Esri, TomTom, Garmin, FAO, NOAA, USGS, © OpenStreetMap contributors, and the GIS User Community

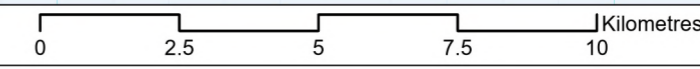
PROJECT TITLE
Hampshire Water Transfer and Water Recycling Project

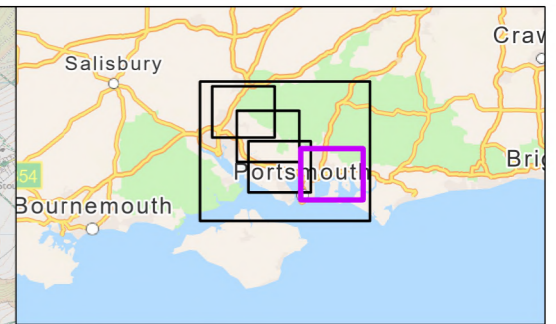
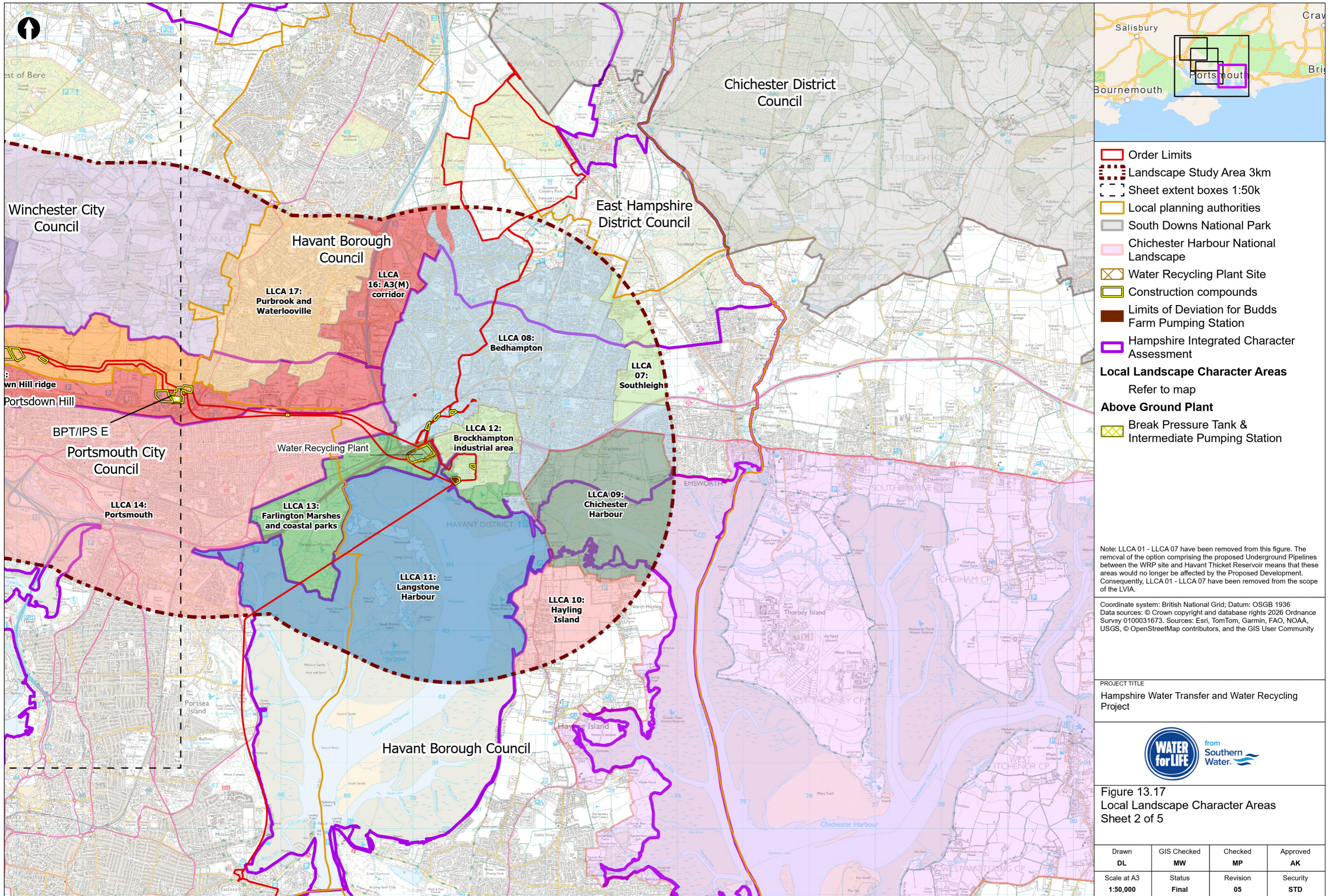


Figure 13.17
Local Landscape Character Areas
Sheet 1 of 5

Drawn DL	GIS Checked MW	Checked MP	Approved AK
Scale at A3 1:136,000	Status Final	Revision 05	Security STD

Drawing Number
PC5223-RHD-ES-ZZ-D-Z-0141





- Order Limits
 - Landscape Study Area 3km
 - Sheet extent boxes 1:50k
 - Local planning authorities
 - South Downs National Park
 - Chichester Harbour National Landscape
 - Water Recycling Plant Site
 - Construction compounds
 - Limits of Deviation for Budds Farm Pumping Station
 - Hampshire Integrated Character Assessment
- Local Landscape Character Areas**
Refer to map
- Above Ground Plant**
- Break Pressure Tank & Intermediate Pumping Station

Note: LLCA 01 - LLCA 07 have been removed from this figure. The removal of the option comprising the proposed Underground Pipelines between the WRP site and Havant Thicket Reservoir means that these areas would no longer be affected by the Proposed Development. Consequently, LLCA 01 - LLCA 07 have been removed from the scope of the LVIA.

Coordinate system: British National Grid; Datum: OSGB 1936
Data sources: © Crown copyright and database rights 2026 Ordnance Survey 0100031673. Sources: Esri, TomTom, Garmin, FAO, NOAA, USGS, © OpenStreetMap contributors, and the GIS User Community

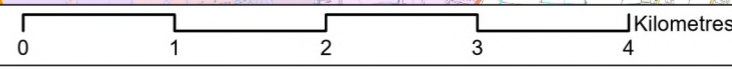
PROJECT TITLE
Hampshire Water Transfer and Water Recycling Project

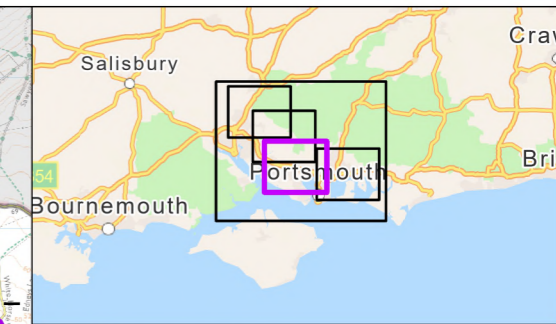
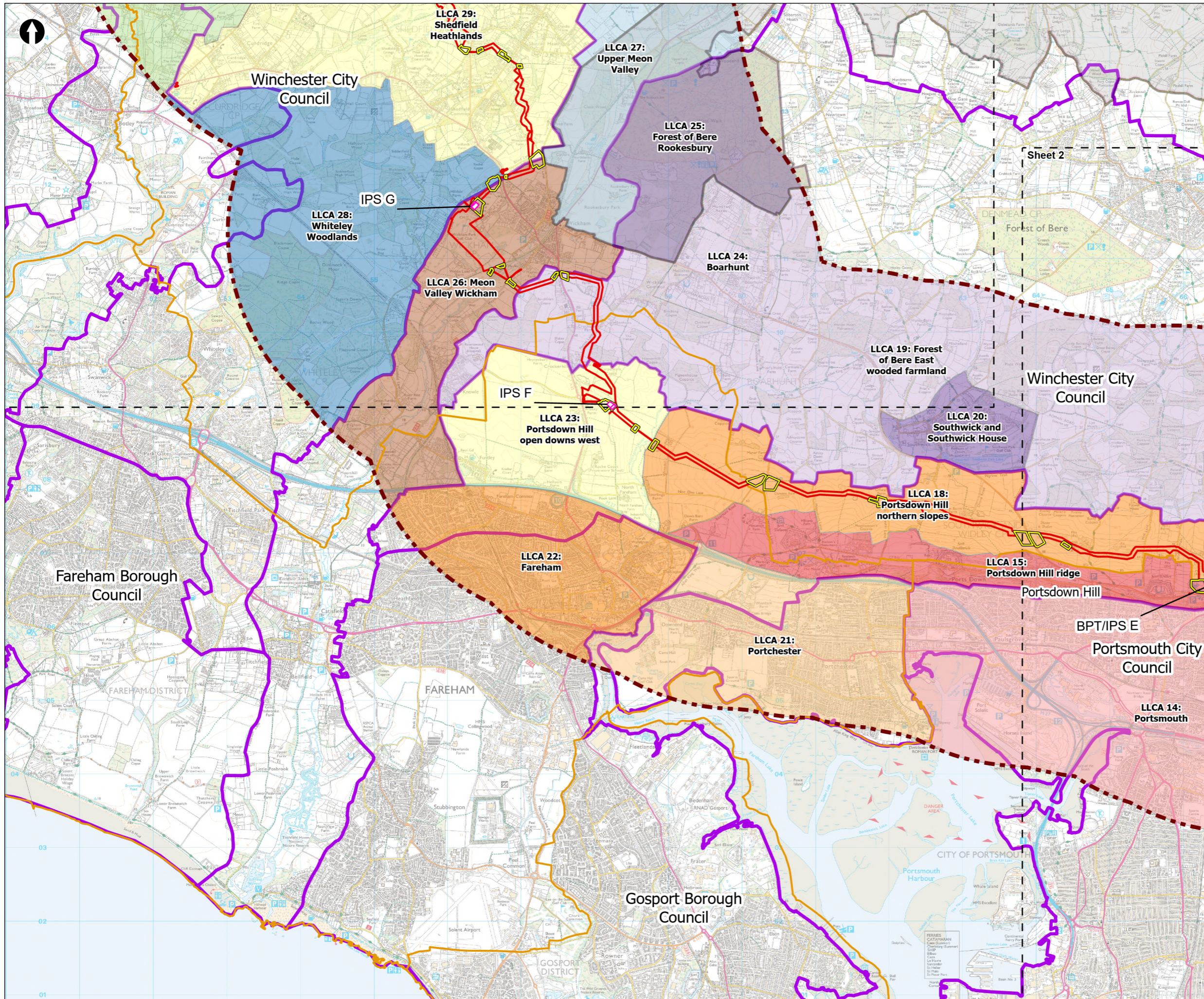


Figure 13.17
Local Landscape Character Areas
Sheet 2 of 5

Drawn DL	GIS Checked MW	Checked MP	Approved AK
Scale at A3 1:50,000	Status Final	Revision 05	Security STD

Drawing Number
PC5223-RHD-ES-ZZ-D-Z-0141





- Order Limits
 - Landscape Study Area 3km
 - Sheet extent boxes 1:50k
 - Local planning authorities
 - South Downs National Park
 - Construction compounds
 - Hampshire Integrated Character Assessment
 - Local Landscape Character Areas**
Refer to map
 - Above Ground Plant**
 - Break Pressure Tank & Intermediate Pumping Station
 - Intermediate Pumping Station
- Note: LLCA 01 - LLCA 07 have been removed from this figure. The removal of the option comprising the proposed Underground Pipelines between the WRP site and Havant Thicket Reservoir means that these areas would no longer be affected by the Proposed Development. Consequently, LLCA 01 - LLCA 07 have been removed from the scope of the LVIA.

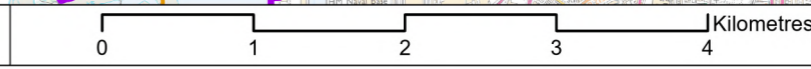
Coordinate system: British National Grid; Datum: OSGB 1936
 Data sources: © Crown copyright and database rights 2026 Ordnance Survey 0100031673. Sources: Esri, TomTom, Garmin, FAO, NOAA, USGS, © OpenStreetMap contributors, and the GIS User Community

PROJECT TITLE
 Hampshire Water Transfer and Water Recycling Project

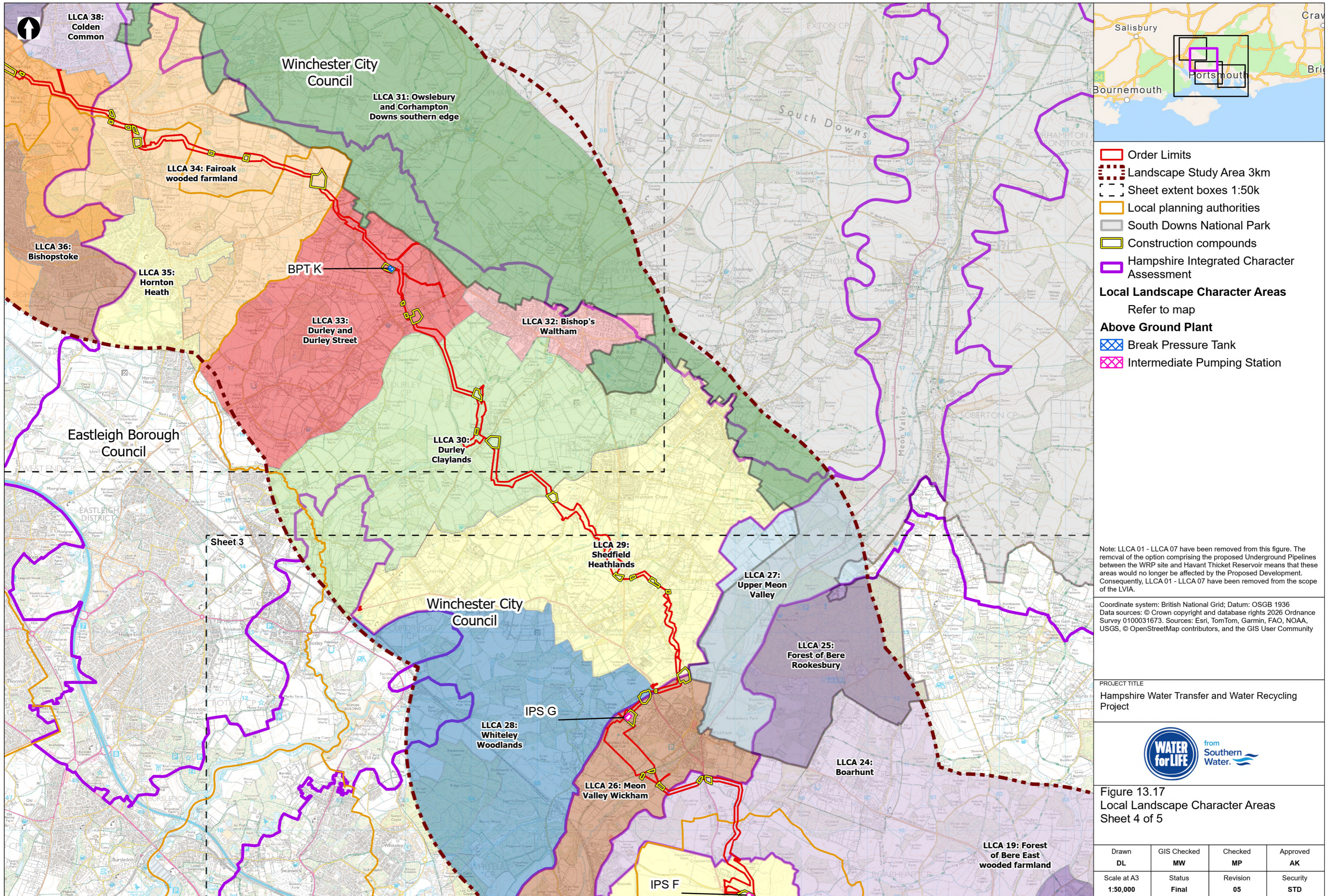


Figure 13.17
 Local Landscape Character Areas
 Sheet 3 of 5

Drawn DL	GIS Checked MW	Checked MP	Approved AK
Scale at A3 1:50,000	Status Final	Revision 05	Security STD



Drawing Number
PC5223-RHD-ES-ZZ-D-Z-0141



- Order Limits
 - Landscape Study Area 3km
 - Sheet extent boxes 1:50k
 - Local planning authorities
 - South Downs National Park
 - Construction compounds
 - Hampshire Integrated Character Assessment
- Local Landscape Character Areas**
Refer to map
- Above Ground Plant**
- Break Pressure Tank
 - Intermediate Pumping Station

Note: LLCA 01 - LLCA 07 have been removed from this figure. The removal of the option comprising the proposed Underground Pipelines between the WRP site and Havant Thicket Reservoir means that these areas would no longer be affected by the Proposed Development. Consequently, LLCA 01 - LLCA 07 have been removed from the scope of the LVIA.

Coordinate system: British National Grid; Datum: OSGB 1936
Data sources: © Crown copyright and database rights 2026 Ordnance Survey 0100031673. Sources: Esri, TomTom, Garmin, FAO, NOAA, USGS, © OpenStreetMap contributors, and the GIS User Community

PROJECT TITLE
Hampshire Water Transfer and Water Recycling Project

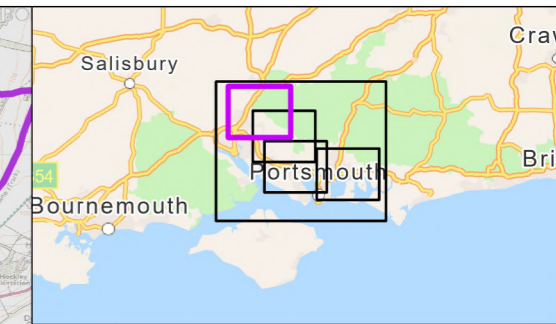
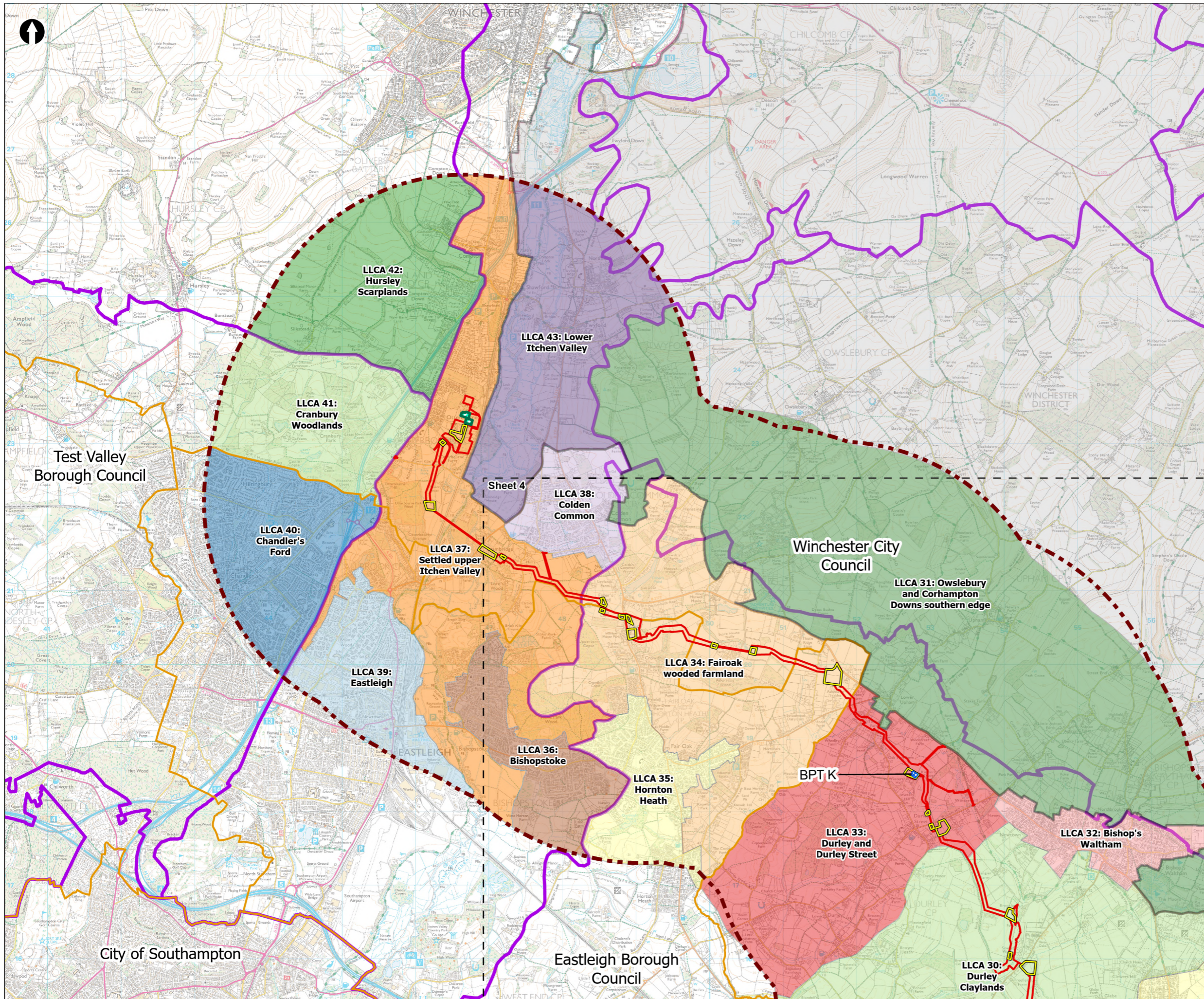


Figure 13.17
Local Landscape Character Areas
Sheet 4 of 5

Drawn DL	GIS Checked MW	Checked MP	Approved AK
Scale at A3 1:50,000	Status Final	Revision 05	Security STD

Drawing Number
PC5223-RHD-ES-ZZ-D-Z-0141





- Order Limits
- Landscape Study Area 3km
- Sheet extent boxes 1:50k
- Local planning authorities
- South Downs National Park
- Construction compounds
- Limits of Deviation for Otterbourne INNS Treatment Plant
- Hampshire Integrated Character Assessment
- Local Landscape Character Areas**
- Refer to map
- Above Ground Plant**
- Break Pressure Tank

Note: LLCA 01 - LLCA 07 have been removed from this figure. The removal of the option comprising the proposed Underground Pipelines between the WRP site and Havant Thicket Reservoir means that these areas would no longer be affected by the Proposed Development. Consequently, LLCA 01 - LLCA 07 have been removed from the scope of the LVIA.

Coordinate system: British National Grid; Datum: OSGB 1936
 Data sources: © Crown copyright and database rights 2026 Ordnance Survey 0100031673. Sources: Esri, TomTom, Garmin, FAO, NOAA, USGS, © OpenStreetMap contributors, and the GIS User Community

PROJECT TITLE
 Hampshire Water Transfer and Water Recycling Project



Figure 13.17
 Local Landscape Character Areas
 Sheet 5 of 5

Drawn DL	GIS Checked MW	Checked MP	Approved AK
Scale at A3 1:50,000	Status Final	Revision 05	Security STD

Drawing Number
 PC5223-RHD-ES-ZZ-D-Z-0141

